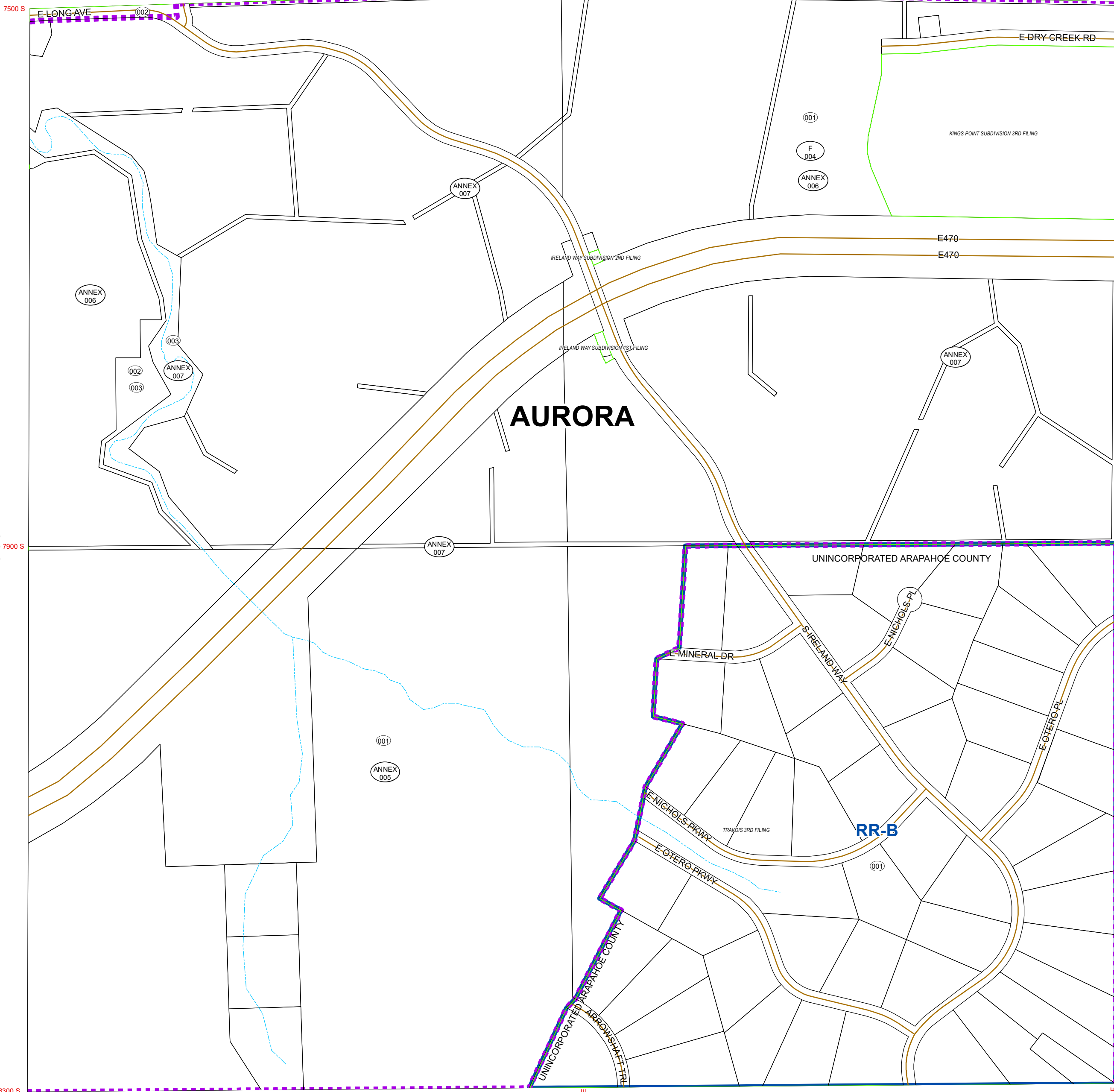


T5S R66W S35 2073-26

Revisions				
CODE	DATE	CASE	FROM	TO
001	05/13/75	Z72-009	A-1	R-A
002	10/16/78	Z78-017	A-1	MU
003	03/03/80	Z79-055	A-1	MU, F
004	08/30/83	A83-026		FDP
005	10/19/87	AO87-89	R-A	AURORA
006	05/23/88	AO 87-90	MU	AURORA
007	03/15/89	AO 89-8	MU	AURORA
	THRU	AO 89-12	MU, F	AURORA



AURORA

001

F
004

ANNEX
006

ANNEX
007

ANNEX
007

001

ANNEX
005

RR-B

DOUGLAS COUNTY

Code Sec
2073 35

Date Saved: 2/9/2022 12:14:09 PM

General Disclaimer:
Arapahoe County Makes No Representation Or Warranty As To The Accuracy Of This Base Map, And Assumes No Responsibility Or Liability To Any User. This Base Map Is Not A Legal Document . It Is Intended To Serve As An Aid In Graphic Representation Only.

	R68W	R67W	R66W	R65W	R64W	R63W	R62W	R61W	R60W	R59W	R58W	R57W
T4S	1971	1973	1975	1977	1979	1981	1983	1985	1987	1989	1991	1993
T5S	2077	2075	2073	2071	2069	2067	2065	2063	2061	2059	2057	2055

