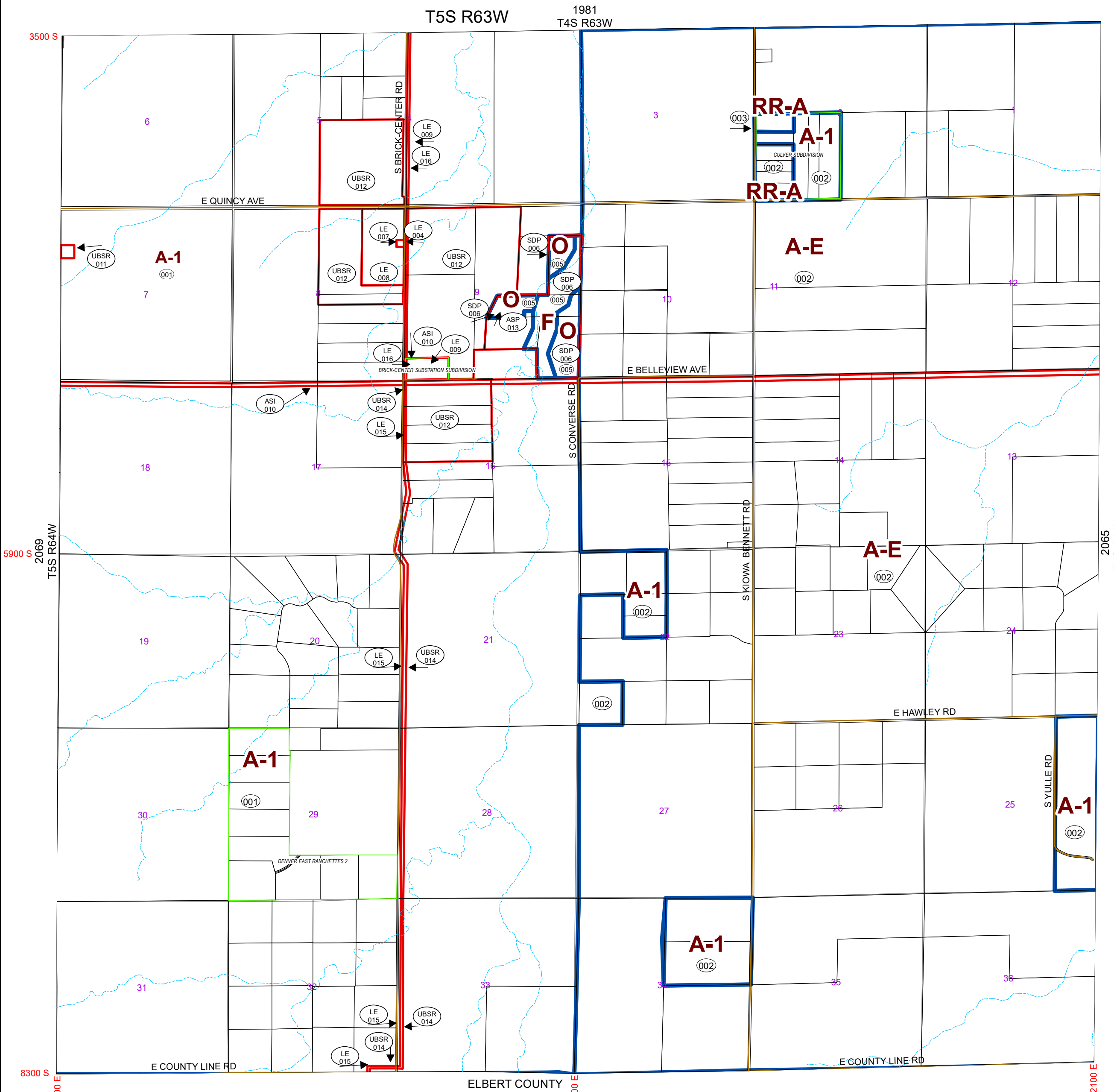


REVISIONS

Code	Date	Case	From	To
001	08/13/88	ORIGINAL ZONING		A-1,A-2
002	06/27/72	ORIGINAL ZONING		A-1,A-2,A-E
003	01/02/79	Z78-048	A-1	A-2
004	06/01/93	L93-004		LE
005	12/11/95	Z95-007	A-1	O.F
006	08/20/96	P96-017		SDP
007	06/16/02	L02-002		LE
008	06/05/07	L07-002		LE
009	07/03/07	L07-003		LE
010	04/05/11	ASH10-001		ASI
011	07/22/13	U13-010		UBSR
012	02/06/18	U17-005		UBSR
013	10/22/18	ASP18-007		ASP
014	04/17/19	ASH17-001		UBSR
015	04/17/19	L17-011		LE
016	08/03/20	AA20-011		LE



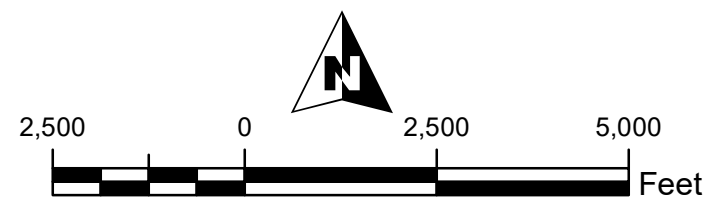
Code Sec
2067 00

Date Saved: 8/10/2020 3:53:12 PM

General Disclaimer:
Arapahoe County Makes No Representation Or Warranty As To The Accuracy Of This Base Map, And Assumes No Responsibility Or Liability To Any User. This Base Map Is Not A Legal Document. It Is Intended To Serve As An Aid In Graphic Representation Only.

	R68W	R67W	R66W	R65W	R64W	R63W	R62W	R61W	R60W	R59W	R58W	R57W
T4S	1971	1973	1975	1977	1979	1981	1983	1985	1987	1989	1991	1993
T5S	2077	2075	2073	2071	2069	2067	2065	2063	2061	2059	2057	2055

- Roads
- Parcels
- Subdivisions
- Zoning Restrictions
- Zoning



Path: G:\DSIMHE\MAPPING\GIS\Projects\Zoning\ZoningMapsByTwp\Twp2067Zoning.mxd