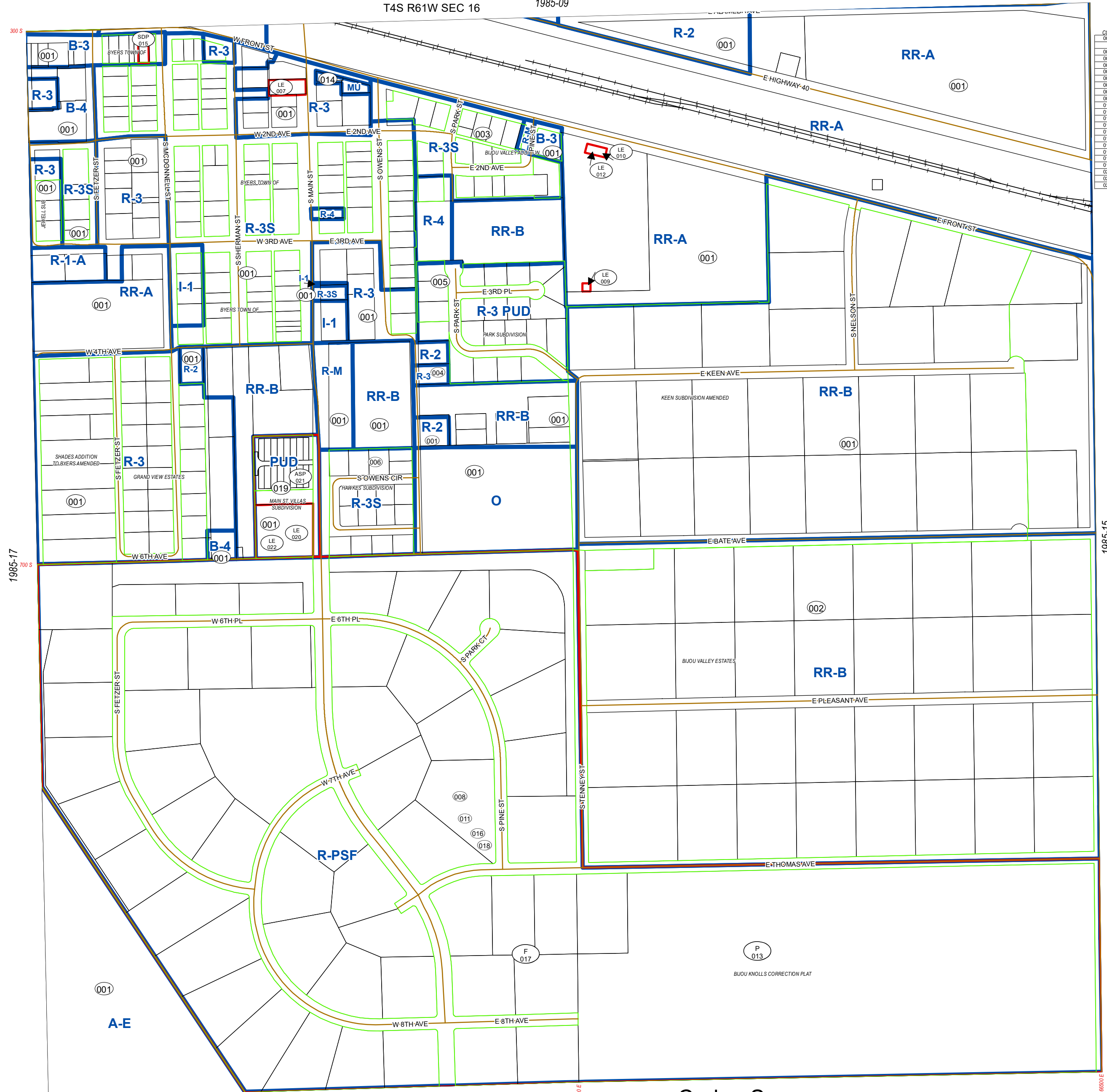


T4S R61W SEC 16 1985-09

CODE	DATE	CASE	REVISIONS	FROM	TO
001	06/27/21	ZONING	RES	R-3S,B-3,R-4,R-A,R-1,R-2,R-3,R-4,R-M,I,O,A-2	R-3S,B-3,R-4,R-A,R-1,R-2,R-3,R-4,R-M,I,O,A-2
002	05/22/78	Z78-002		R-3	R-3
003	06/06/78	Z78-006		R-3	R-3
004	12/28/78	Z78-046		R-2	R-3
005	05/07/79	Z78-056		R-3	R-3 PUD
006	03/29/82	Z81-007		R-3	R-3S
007	09/20/84	L94-004		LE	LE
008	04/08/96	Z95-019		A-E, R-A	MU
009	06/17/99	L97-003		LE	LE
010	08/04/98	L98-002		LE	LE
011	09/26/00	Z99-024		MU,PUD	R-1
012	08/07/02	L01-010		LE	LE
013	08/14/04	A04-001		PDP	PDP
014	12/09/08	Z08-001		R-3	MU
015	08/10/11	P10-001		SDP	SDP
016	11/18/14	Z14-004		R-1	R-PSF
017	03/02/15	P14-017		PDP	PDP
018	09/04/18	GDP18-001		R-PSF	R-PSF
019	01/29/19	SDP218-001		R-A	PUD
020	11/19/19	LE19-002		LE	LE
021	02/04/20	ASP19-004		ASP	ASP
022	12/03/20	AA20-016		LE	LE



1985-17

1985-15

1100 S

6600 E

- Railroads
- Roads
- Subdivisions
- Parcels
- Zoning Restrictions
- Zoning

1985-21

Code Sec
1985 16

Date Saved: 1/5/2021 4:28:23 PM

General Disclaimer:
 Arapahoe County Makes No Representation Or Warranty As To The Accuracy Of This Base Map, And Assumes No Responsibility Or Liability To Any User. This Base Map Is Not A Legal Document . It Is Intended To Serve As An Aid In Graphic Representation Only.

	R62W	R67W	R66W	R65W	R64W	R63W	R62W	R61W	R60W	R59W	R58W	R57W
1985	1971	1973	1975	1977	1979	1981	1983	1985	1987	1989	1991	1993
1985	2077	2075	2073	2071	2069	2067	2065	2063	2061	2059	2057	2055

