

JUSTICE SYSTEM INVESTMENT

- **BACKGROUND**
- **2016 ACJC STUDY SUMMARY**
- **BOCC AND LONG RANGE BUDGET PLANNING QUESTIONS**
- **2018 DEMOGRAPHIC AND CASE FILING PROJECTIONS SUMMARY**
- **2018 UPDATE METHODOLOGY**
- **2018 OPTIONS SUMMARY**
- **JUDGE SAMOUR COMMENTS/QUESTIONS**

JUSTICE SYSTEM INVESTMENT – BACKGROUND

- **2006: ACJC MASTER PLAN**
 1. *PROGRAM MOVES TO ACCOMMODATE NEW COURTROOMS*
 2. *ADDITION TO COURTHOUSE 2 TO IMPROVE INMATE CIRCULATION*
 3. *SPACE MODIFICATIONS TO COURTHOUSE 2 FOR ADMINISTRATION SUPPORT OPERATIONS*
 4. *INTERIOR CORRIDOR CONNECTION BETWEEN BUILDINGS*
 5. *VISITOR PARKING IMPROVEMENTS*

- **2015: CONCERNS RAISED BY CHIEF JUDGE**
 1. *SPACE FOR FUTURE GROWTH IN JUDICIAL OFFICER ASSIGNMENTS*
 2. *ORGANIZATION OF FACILITY IS INEFFICIENT*
 3. *CERTAIN COURTROOMS HAVE LIMITED USEFULNESS*
 4. *AGING BUILDING INFRASTRUCTURE (1987/91)*

- **2016: JUDICIAL SYSTEM GROWTH REVIEW AND FACILITY ANALYSIS**

JUSTICE SYSTEM INVESTMENT – 2016 EVALUATION SUMMARY

- **2015 STATE DEMOGRAPHICS FOR ARAPAHOE COUNTY**
 1. *2014 CENSUS – 618,821*
 2. *2016 – 639,337*
 3. *2026 Est – 761,000*
 4. *2036 Est – 918,000*
- **2015 CASE FILING PROJECTIONS FOR ARAPAHOE COUNTY DISTRICT COURT***
 1. *2016 – 24,187*
 2. *2026 Est – 29,662*
 3. *2036 Est – 35,155*
- **DISTRICT JO PROJECTED BASED ON FORECASTED FILINGS**
 1. *CURRENT (2017) – 22.25*
 2. *2021 Proj – 24*
 3. *2026 Proj – 27*
 4. *2036 Proj – 32*
- **EXISTING FACILITY**
 1. *EXISTING FACILITY NEEDS SIGNIFICANT UPGRADES FOR SECURITY, COURT ADMINISTRATION, AND CAPITAL MAINTENANCE AND LACKS FUTURE EXPANSION SPACE*
 2. *PROVIDED 2 OPTIONS TO MEET LONG TERM ACJC NEEDS: CAPITAL COST \$215 – 300M*

*Case filings is the basic measure of demand for judicial services.

JUSTICE SYSTEM INVESTMENT – BOCC QUESTIONS

- **IMPACT OF JUDICIAL GROWTH ON OTHER PROGRAMS**
- **TOTAL COST TO INCLUDE STAFF, OPERATIONS, ETC**
- **TIMING**
- **REFERRAL TO LRBPC**

JUSTICE SYSTEM INVESTMENT – BUDGET PLANNING DISCUSSIONS

- **BETTER UNDERSTANDING OF THE COURT SYSTEMS PROGRAM NEEDS AND WHAT WAS IMPACTING THE GROWTH**
- **CAN WE IMPROVE OPTIMIZATION OF CURRENT COURTROOM UTILIZATION**
- **EXISTING FACILITY ISSUES**
- **TIMING FOR FUTURE SPACE NEEDS**
- **2016 REPORT UPDATE**

JUSTICE SYSTEM INVESTMENT – ACJC EVALUATION UPDATE

- **UPDATE NEAR AND LONG TERM CASE FILING PROJECTIONS**
- **EVALUATE COURTROOM UTILIZATION**
- **RESPOND TO QUESTIONS ABOUT “DARK COURTROOMS”**
- **COMMENT ON EXISTING FACILITY**

JUSTICE SYSTEM INVESTMENT – UPDATE SUMMARY

- STATE PROJECTS SLOWER POPULATION GROWTH THAN 2015 PROJECTIONS:
 1. 2026 – 738,000 vs 761,000
 2. 2036 – 840,000 vs 918,000
- DISTRICT COURT CASE FILING PROJECTIONS LOWER THAN 2015 STUDY:
 1. 2026 – 28,098 vs 29,662
 2. 2036 – 33,053 vs 35,155
- ADDITIONAL JUDICIAL OFFICER ASSIGNMENTS
 1. 2026 – 3 vs 5
 2. 2029 – 4 vs 7
 3. 2036 – 7 vs 10
- PROCESSES IN PLACE TO OPTIMIZE COURTROOM UTILIZATION
- EXISTING FACILITY NEEDS SIGNIFICANT UPGRADES FOR SECURITY, COURT ADMINISTRATION, CAPITAL MAINTENANCE, AS WELL AS ADDITIONAL SPACE TO FUNCTION AS A MODERN JUDICIAL CENTER.

JUSTICE SYSTEM INVESTMENT – FORECASTS

- **FORECAST TRAPS:**

1. *OVERCONFIDENCE*
2. *PRUDENCE*
3. *VEROPTIMISTIC*

- **FAMOUS FORECASTS:**

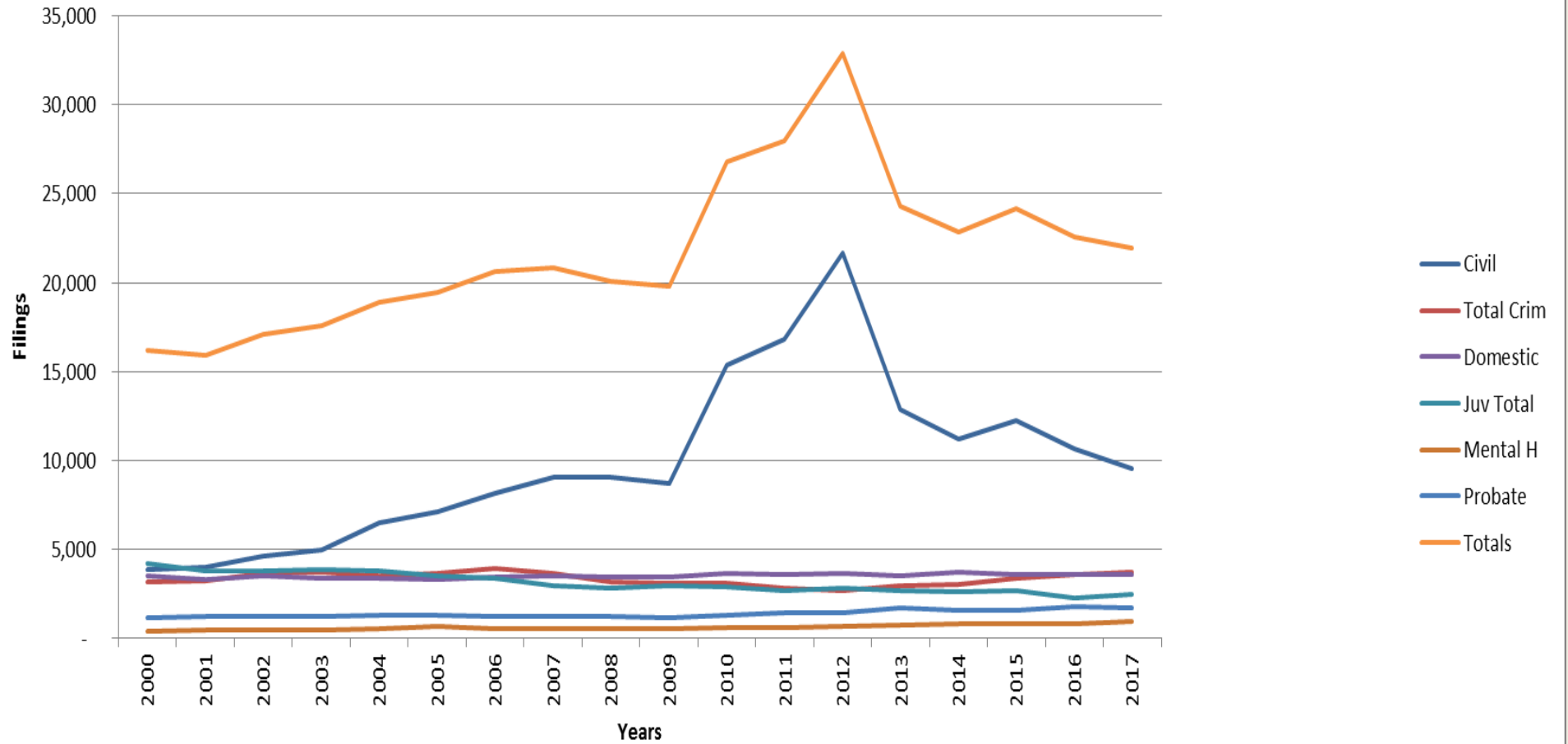
1. *LORD CALVIN – “HEAVIER THAN AIR MACHINES WILL NEVER FLY”*
2. *THOMAS WATSON – “THE LONG TERM WORLD WIDE DEMAND FOR MAIN FRAME COMPUTERS IS PROBABLY 5”*
3. *SIR MICHAEL LLOYD – “THE TITANIC WILL NEVR SINK”*

- **REASONABLE BASED ON DATA RESEARCH AND PREDICTABLE TRENDS**

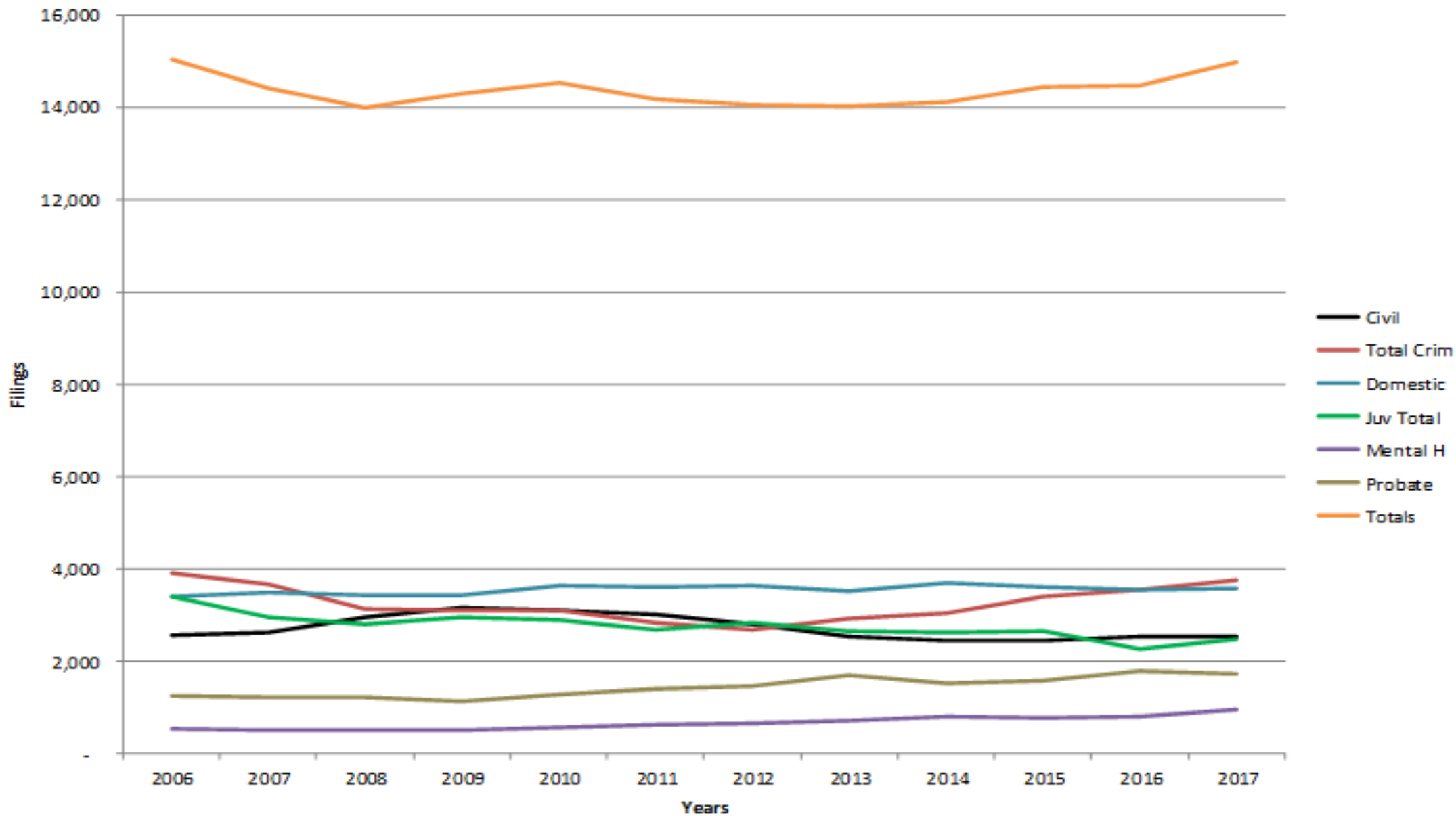
- **MONITOR AND ADJUST**



District Court Historical Caseload 2000-2017



District Court Filings excluding Foreclosures 2006-2017



JUSTICE SYSTEM INVESTMENT – 2018 ANALYSIS

- **CONSULTANT’S CASE FILING PROJECTION METHODOLOGY**

1. *REGRESSION ANALYSIS*

- **DEMOGRAPHICS**
- **HISTORICAL CASE FILINGS**
- **STATUTE REVISIONS**
- **BUDGET RESTRICTIONS – LAW ENFORCEMENT AND DA STAFF**
- **USE OF ALTERNATIVE DISPUTE AND ADJUDICATION METHODS**
- **ECONOMIC ANAMOLIES**

2. *HISTORICAL AVERAGE % INCREASE*

3. *RATIOS TO POPULATION FOR RECENT TRENDS (5-7 years)*

4. *COMPOSITE PROJECTIONS*

JUSTICE SYSTEM INVESTMENT – 2018 ANALYSIS

PROJECTION ALTERNATIVES (EXCLUDING FORECLOSURES/DISTRAINT WARRANTS)

ALTERNATIVE	CASE FILING PROJECTIONS	
	2026	
LINEAR REGRESSION (2006 – 2017)	14,395	
AVERAGE INCREASE/YEAR (2006 – 2017)	16,611	
EXISTING RATIO TO POP. (2012 – 2017)	17,079*	
HIGH RATIO TO POP. (2012 – 2017)	17,421	
LOW RATIO TO POP. (2012 – 2017)	16,764	
AVERAGE RATIO TO POP. (2012 – 2017)	17,008	

HIGHEST CORRELATION COEFFICIENT - .9 AND WITHIN 95% OF AOC PROJECTIONS (16,528)

JUSTICE SYSTEM INVESTMENT – 2018 ANALYSIS

JUDICIAL OFFICER PROJECTIONS

YEAR	DISTRICT JUDICIAL OFFICERS
2017 (CURRENT)	22.25
2021	23
2026	25
2029	27
2031	27
2036	29

JUSTICE SYSTEM INVESTMENT – SUMMARY

- **UPDATED EVALUATION:**

1. *PROJECTS SLOWER GROWTH WHILE VALIDATING NEED FOR FUTURE COURTROOM EXPANSION*
2. *VALIDATES EXISTING FACILITY ISSUES AND LACK OF LONG TERM EXPANSION CAPACITY*

- **LEVEL OF SERVICE FOR CURRENT FACILITY WOULD LIKELY MEASURE LOW TO MEDIUM:**

1. *NUMBER OF CURRENT DISTRICT COURTROOMS MARGINAL (23 VS 22.25 JO)*
2. *EQUIPMENT OBSOLESCENCE*
3. *SPATIAL INEFFICIENCIES*

- **ADDRESSING JUDICIAL NEEDS**

1. *EXPANSION/MODERNIZATION OR NEW FACILITY*
2. *CAPITAL INVESTMENT IN COURTROOM CONVERSION (3) AND CAPITAL REPAIR AND REPLACEMENT ALONG WITH DEVELOPMENT OF A LONG RANGE PLAN TO FUND AND OPEN A NEW FACILITY CIRCA 2029 (FUNDING 2023/24)*